

# PULSOR 170 ASSEMBLY



## CONSTRUCTION & INFRASTRUCTURE

Concrete pump and placement



### APPLICATIONS

- High pressure concrete pump hose for boom transfer, placement.
- Pneumatic discharge of cement and minerals.
- Pumping of slurry and drilling mud (not oil-laden).
- Grouting of mortar, cement, or concrete.

### ADVANTAGES

- Very high resistance of the hose gives extended service life.
- Flexible, easy to handle.
- Robust construction to withstand heavy compressive loads and guarantee maximum safety.
- Construction eliminates kinking and allows easy cleaning by reverse pumping.
- Safety factor 2:1.

### TECHNICAL DESCRIPTION

Inner tube: abrasion resistant NR, black, smooth.

Reinforcement: two steel cords plies for ID 51mm, four steel cords plies for other diameters.

Cover: abrasion and weather resistant NR, black, fabric impression.

Temperature range: -30 °C to +80 °C.

### COUPLINGS/FITTINGS

All the end fittings are nitrided steel and zinc plated.

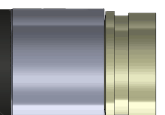
### COMPLEMENTARY INFORMATION

PSV = Putzmeister, Schwing, Victaulic.



TRELLEBORG

PULSOR 170



**CONSTRUCTION &  
INFRASTRUCTURE****PULSOR 170 ASSEMBLY**

| ID<br>mm | WALL<br>THICKNESS<br>mm | OD<br>mm   | WORKING<br>PRESSURE<br>bar | BURSTING<br>PRESSURE<br>bar | MAX.<br>VACUUM<br>bar | BENDING<br>RADIUS<br>mm | WEIGHT<br>kg/m | LENGTH<br>m | TYPE        | ARTICLE<br>NUMBER | STOCK ( )<br>or min.<br>order<br>m |
|----------|-------------------------|------------|----------------------------|-----------------------------|-----------------------|-------------------------|----------------|-------------|-------------|-------------------|------------------------------------|
| 76.0     | 13 ±0.8                 | 102.0 ±2.0 | 85                         | 170                         | 0.8                   | 320                     | 6.33           | 3           | 1 PSV 3"    | 5513875           | 1                                  |
| 76.0     | 13 ±0.8                 | 102.0 ±2.0 | 85                         | 170                         | 0.8                   | 320                     | 6.09           | 4           | 1 PSV 3"    | 5513876           | 1                                  |
| 76.0     | 13 ±0.8                 | 102.0 ±2.0 | 85                         | 170                         | 0.8                   | 320                     | 5.95           | 5           | 1 PSV 3"    | 5513877           | 1                                  |
| 102.0    | 13 ±0.8                 | 128.0 ±2.0 | 85                         | 170                         | 0.8                   | 380                     | 8.93           | 3           | 1 PSV 4"1/2 | 5513883           | 1                                  |
| 102.0    | 13 ±0.8                 | 128.0 ±2.0 | 85                         | 170                         | 0.8                   | 380                     | 8.5            | 4           | 1 PSV 4"1/2 | 5601589           | 1                                  |
| 102.0    | 13 ±0.8                 | 128.0 ±2.0 | 85                         | 170                         | 0.8                   | 380                     | 7.9            | 5           | 1 PSV 4"1/2 | 5513884           | 1                                  |
| 127.0    | 14 ±0.8                 | 155.0 ±2.0 | 85                         | 170                         | 0.8                   | 450                     | 11.8           | 3           | 1 PSV 5"1/2 | 5601590           | 1                                  |
| 127.0    | 14 ±0.8                 | 155.0 ±2.0 | 85                         | 170                         | 0.8                   | 450                     | 11.3           | 4           | 1 PSV 5"1/2 | 5601648           | 1                                  |
| 127.0    | 14 ±0.8                 | 155.0 ±2.0 | 85                         | 170                         | 0.8                   | 450                     | 11             | 5           | 1 PSV 5"1/2 | 5601731           | 1                                  |

Tolerance on length: ±1% (ISO 1307 Standard).

**TRELLEBORG**

[WWW.TRELLEBORG.COM/FLUIDHANDLING](http://WWW.TRELLEBORG.COM/FLUIDHANDLING)