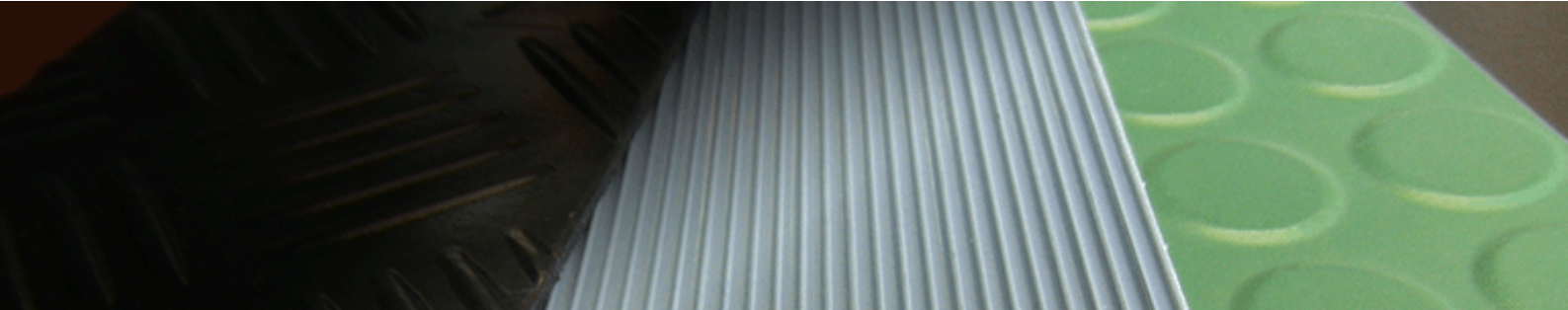




ELECMAT SBR NR



**TECHNICAL
MATTING /
ELECTRICAL
INSULATION**

FEATURES

Fine or wide grooved or checkered pattern.

REGULATIONS

‡ The material is in compliance with EN-60243-1.

APPLICATIONS

Prevention of electric shock risk around high voltage electrical equipment, such as fuse boxes, control panels, switchgear and heavy machinery.

ADVANTAGES

- ‡ Electric insulation
- ‡ Noise, vibration, and cold propagation reduction
- ‡ Non-slippery
- ‡ Acoustic insulation
- ‡ Excellent walking and standing comfort

BENEFITS

- ‡ Safety
- ‡ Comfort
- ‡ Service life

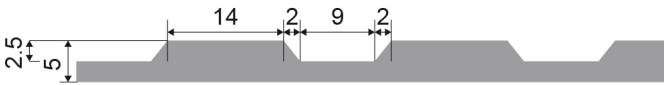
MECHANICAL, PHYSICAL AND CHEMICAL PROPERTIES

| Measured characteristics | Standard | Value | |
|--------------------------|--------------|--------|-----------------|
| MECHANICAL | | | |
| Rubber compound | | SBR NR | |
| Hardness | ASTM D2240 | 70 ±5 | Shore A |
| Abrasion resistance (5N) | ISO 4649 | ≤180 | mm ³ |
| Residual indentation | EN ISO 24343 | ≤0.15 | mm |
| Dimensional stability | EN ISO 23999 | ±0.3 | % |
| Sound insulation | ISO 10140-3 | 12 | dB |

CHEMICAL RESISTANCE

| | | |
|--------------------------|--------|------|
| Common cleaning products | EN 423 | Good |
|--------------------------|--------|------|

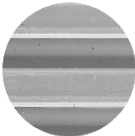
PROFILE



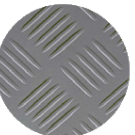
PATTERN



Fine triangular ribbed (MT)



Wide ribbed M39 (MG)

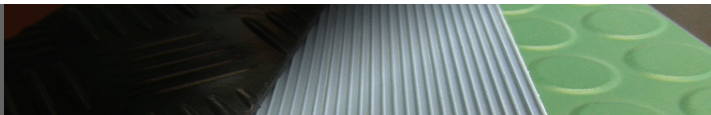


Checker (MK)

IDENTIFICATION

| | |
|-----------|--|
| Branding | Fine ribbed: without branding or branded 30KV or 50KV following IEC 60243-1. Wide ribbed: without branding. Checker: branded 30KV following IEC 60243-1. |
| Back face | Fabric impression. |
| Packaging | Rolled on cardboard tube Ø 80mm. |
| Wrapping | Black polyethylene film. |
| Labelling | Self-adhesive label indicating product name, dimensions, area in m ² , nominal weight, and product code to allow product traceability. |

Unless typographical error, information and figures of our technical datasheet are based on our experience and laboratory tests according to international standards. This data is intended to be used as a guideline only. Material performance depends on the conditions of use and the final application.

| SBR NR | | TECHNICAL MATTING / ELECTRICAL INSULATION | | ELECMAT | |  | |
|---|-----------------|--|-------------|-----------------------------|---------|---|--|
| COLOR | THICKNESS mm | WIDTH mm | LENGTH m | WEIGHT kg/m ² | PATTERN | DIELECTRIC STRENGTH | |
| GREY | 3±0.3 | 1400± 2 % | 10± 2 % | 4.08 | MK | 30KV | |
| GREY | 3±0.3 | 1200± 2 % | 10± 2 % | 3.8 | MT | 30KV | |
| GREY | 3±0.3 | 1000± 2 % | 10± 2 % | 3.73 | MT | 30KV | |
| GREY | 4.5±0.4 | 1200± 2 % | 10± 2 % | 5.7 | MT | 50KV | |
| GREY | 4.5±0.4 | 1000± 2 % | 10± 2 % | 6.16 | MT | 50KV | |
| GREY | 5±0.4 | 1200± 2 % | 10± 2 % | 6.08 | MG | 50KV | |
| Depending on the manufacturing process there could be differences in some tonalities of the roll colours. Colours of the sample kits and catalogues have to be considered as indicative. | | | | | | | |

